

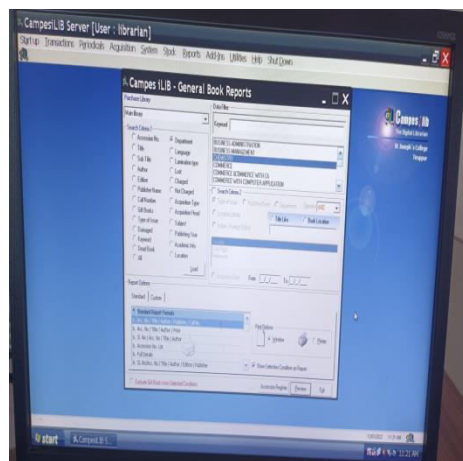
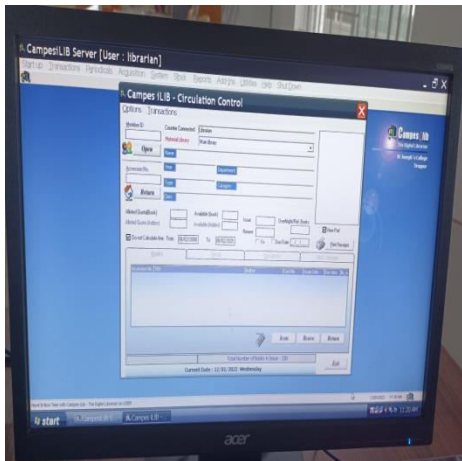
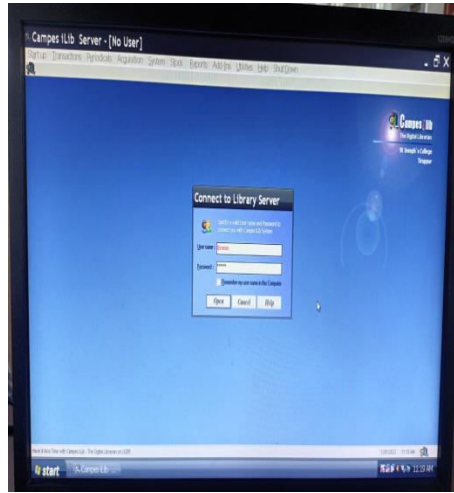
4.2.1. Library is automated using Integrated Library Management System (ILMS)

Name of the ILMS : Campes i LIB

Nature of Automation : Fully

Version : 6.1.9

Year of Automation : 2005



About Campes i LIB:

Campes iLIB software is designed to manage the institutional library management process. It captures almost every activity related to library and it has provision to log almost all stock kept in the library like books, periodicals, back volumes and other non book materials etc.,

Modules of Campes i LIB

1. Administration Module

2. OPAC

3. E-gate Register

1. Administration software module:

Sign in to Administration module: The administration module works in multilevel security the default user is Librarian and the default password will be shared with librarian at the time of installation.

Characteristics and Features:

- Manage members
- Manage books
- Manage Non- books
- Manage periodicals
- Circulation of materials

2. Online Public Access Catalog (OPAC)

The Online Public Access catalog includes following facilities like

- Book search
- Periodical search
- Non-book search
- Member Due check
- Member Transaction History View
- Book Reservation

3. E-gate Register

Online Module works interactively capturing the data from a barcode scanner and logs as Visitor entry.